

Performance **BY DESIGN**

Premium Molded Fiber Wine Shippers



Featuring
The Folding Club
2 Bottle

VINTNER'S CHOICE



WINE PACK

Low cost protection. Tested and proven.

Vintner's Choice wine shippers perform well in the test labs and in the field.

The patented molded fiber geometries are designed to withstand the hazards of today's distribution environment.

You can have confidence in Vintner's Choice, knowing that all shippers have repeatedly met the high standards required by FedEx, UPS, and ISTA test labs.

You can feel the difference. They're built tougher... so they hold up better.



Performance **BY DESIGN**



Tested for winter and summer transport conditions.*

"According to the winter and the summer thermal mapping data, there was little difference between the 12 bottle upright EPS wine shipper and [Western's] 12 bottle lay down wine shipper."

"The thermal properties of these two package types are similar as depicted in the graphs. Some slight resistance to heat transfer was noted at the center of the EPS package system; however, both packages attained equilibrium in less than a 12 hour period. The insulating characteristics of both package systems are considered to be equal regardless of the location of the bottle within the package system."

— WESTPAK, Inc. Report No. 111-09-1797A Rev. 1

* Two (2) package systems containing 12-Pack Wine Bottles were subjected to temperature testing per ISTA 7D-2007, Cyclic Test Profile for winter and summer transport conditions for international shipments from the United States (72 hour International expedited airfreight transport). Full report available upon request.

Damage protection. Tested for shock and vibration under dynamic load.

Bottle Count	Shipper Tested	FedEx®			UPS®		
		Test	Carton	Results	Test	Carton	Results
1	Folding Club	Domestic	32 ECT	✓	ISTA 3A	32 ECT	✓
2	Folding Club	Domestic	32 ECT	✓	ISTA 3A	32 ECT	✓
4	Folding Club	Domestic	32 ECT	✓	ISTA 3A	32 ECT	✓
1	1-2-4 Bottle	Domestic	200 LB	✓	ISTA 3A	32 ECT	✓
2	1-2-4 Bottle	Domestic	200 LB	✓	ISTA 3A	200 LB	✓
4	1-2-4 Bottle	Domestic	32 ECT	✓	ISTA 3A	32 ECT	✓
3	3-6-12 Bottle	Domestic	200 LB	✓	ISTA 3A	200 LB	✓
6	3-6-12 Bottle	Domestic	200 LB	✓	ISTA 3A	200 LB	✓
12	3-6-12 Bottle	Domestic	44 ECT ⁽¹⁾	✓	ISTA 3A	44 ECT ⁽¹⁾	✓
3	3-6-12 XL Bottle	Domestic	200 LB	✓	ISTA 3A	200 LB	✓
6	3-6-12 XL Bottle	Domestic	200 LB	✓	ISTA 3A	200 LB	✓
12	3-6-12 XL Bottle	Domestic	200 LB ⁽¹⁾	✓	ISTA 3A	44 ECT ⁽¹⁾	✓
1	1.5L Magnum	Domestic	32 ECT	✓	ISTA 3A	32 ECT	✓
2	1.5L Magnum	Domestic	32 ECT	✓	ISTA 3A	32 ECT	✓
3	1.5L Magnum	Domestic	40 ECT	✓	ISTA 3A	40 ECT	✓
4	1.5L Magnum	Domestic	40 ECT	✓	ISTA 3A	40 ECT	✓
6	1.5L Magnum	Domestic	40 ECT	✓	ISTA 3A	40 ECT	✓
12	12 Bottle Case	Domestic	275 LB ⁽¹⁾	✓	ISTA 3A	275 LB ⁽¹⁾	✓
6	6 Bottle Half Case	Domestic	275 LB	✓	ISTA 3A	275 LB	✓

✓ Denotes a specific wine pack configuration passed, accepted or met requirements. Results do not imply a blanket approval by FedEx or UPS.

¹ FedEx and UPS recommend a 275 lb, double-wall carton for full cases of wine for distribution via the single package environment.

FedEx is a registered trademark of FedEx Corporation. UPS is a registered trademark of United Parcel Service of America, Inc.

Made in the U.S.A.

Vintner's Choice wine shippers are made by Western Pulp Products Company, which, since 1958, has manufactured a variety of innovative molded fiber products that:

- Divert waste fiber from landfills or incineration;
- Displace products that are not biodegradable;
- Use renewable and sustainable materials;
- Recycle, compost or biodegrade after use.

With our on-going commitment to conserve natural resources, we recognized early on that recovered paper was an important raw material. Because it is re-used in our products, it reduces the chance of it ending up in our local landfills and ensures that we get the maximum value out of wood fiber.

Responsible **MANUFACTURING**

Socially responsible.

Increasingly, consumers today are flocking to producers who use sustainable and organic practices, as well as those sources that provide safe and healthy standards for their workers.



Post-consumer paper used in Western's wine shippers is purchased directly from recyclers, including charitable groups in our community at fair market value, which in turn, supports those they serve.

Environmentally responsible.

Western is a strong advocate of proper recycling, recovery, and handling of waste associated with packaging. Western designs its packaging components to minimize environmental impact in compliance with many agencies, including:

- CONEG CERTIFICATION/MODEL TOXICS IN PACKAGING COMPLIANCE
- CALIFORNIA TOXICS IN PACKAGING PREVENTION ACT
- EUROPEAN UNION'S DIRECTIVE ON PACKAGING AND PACKAGING WASTE (pertaining to heavy metals content requirements)
- 2008 U.S. LACEY ACT AMENDMENTS

For more information, go to westernpulp.com to view Western's Certificates of Compliance.



The wine industry and the environment.

"Sustainable winegrowing not only improves wine quality, but helps us compete in the global marketplace where consumers are increasingly interested in knowing that the foods and wines they enjoy are produced in an environmentally friendly manner."

— *The Wine Institute, 2016*

Reducing your transportation carbon footprint

Vintner's Choice innovative designs nest together efficiently, saving almost 2/3 the space needed for EPS shippers. This reduces in-bound freight cost and emissions from the number of trucks required to deliver product.



Vintner's Choice wine shippers are manufactured from recycled paper helping wineries meet their environmental goals.

99% Minimum **RECYCLED CONTENT**

Customers trending towards sustainable products.

Retail customers respond favorably to products that contain recycled or reclaimed material. Because Vintner's Choice wine shippers are made with recycled paper, they can be also be recycled or composted.

The shippers contain a minimum 99% post-consumer recycled paper content (dry weight basis) based on 5 years of third-party independent certification.

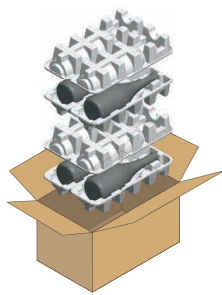
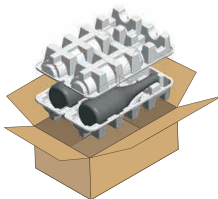
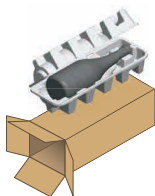
Let your customers know you care by placing a Good Steward card inside every shipment.

Read more at westernpulp.com



Specifications

Designed to meet the needs of today's high-volume fulfillment market. The Folding Club is more compact and accepts a full range of bottle shapes. It can also be used in a 4-bottle configuration.



AVAILABLE QUANTITIES

Case		38 Shippers
Case/Pallet		1,254 Shippers
Bulk / Pallet		1,254 Shippers

CONFIGURATION

Pack Count		1
Shipper Count		1
Cubic Feet		0.27

CONFIGURATION

Pack Count		2
Shipper Count		2
Cubic Feet		0.51

CONFIGURATION

Pack Count		4
Shipper Count		4
Cubic Feet		0.96

Folding Club

2 BOTTLE

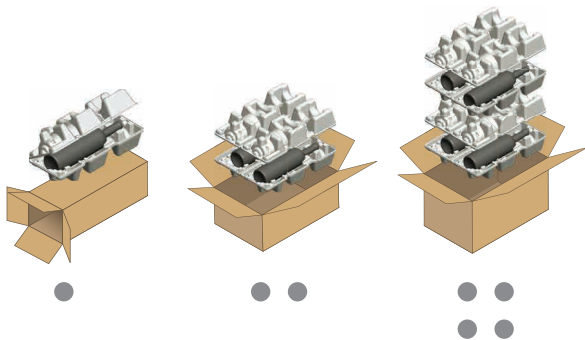




1-2-4 Bottle LAYDOWN

Specifications U.S. Patent 6,820,743

Western's larger, premium folding shipper provides a greater perimeter of protection for the ultimate in shock absorption. The shipper's design accommodates larger diameter bottles.



AVAILABLE QUANTITIES

Case	30 Shippers
Case/Pallet	1,080 Shippers
Bulk/Pallet	N/A

CONFIGURATION

Pack Count	1
Shipper Count	1
Cubic Feet	0.31

CONFIGURATION

Pack Count	2
Shipper Count	2
Cubic Feet	0.60

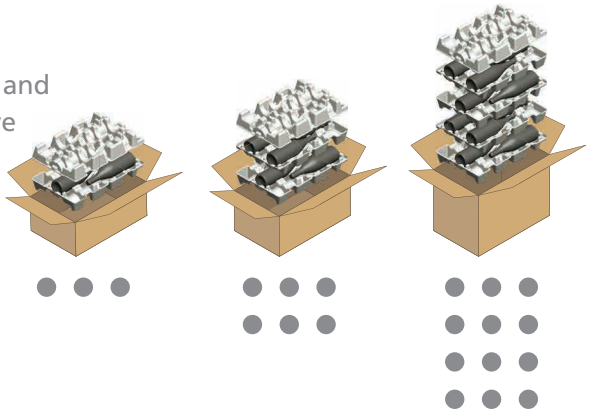
CONFIGURATION

Pack Count	4
Shipper Count	4
Cubic Feet	1.22

Specifications *U.S. Patent 6,820,743*

Designed with input from vineyard and wine store managers, this innovative design dramatically reduces storage space requirements.

The versatile two-sided shipper accommodates most standard 750ml bottles shapes in packs of 3 to 12 bottles.



AVAILABLE QUANTITIES

Case	30 Shippers
Case/Pallet	960 Shippers
Bulk/Pallet	832 Shippers

CONFIGURATION

Pack Count	3
Shipper Count	2
Cubic Feet	0.85

CONFIGURATION

Pack Count	6
Shipper Count	3
Cubic Feet	1.22

CONFIGURATION

Pack Count	12
Shipper Count	5
Cubic Feet	1.95

3-6-12 Bottle LAYDOWN



The most versatile shipper on the market today.

The 3-6-12 XL was designed to be a single-shipper solution to the problem of fitting unusual and extreme bottle profiles, including those with:

- Large diameters;
- High shoulders;
- Tall, slender lengths.

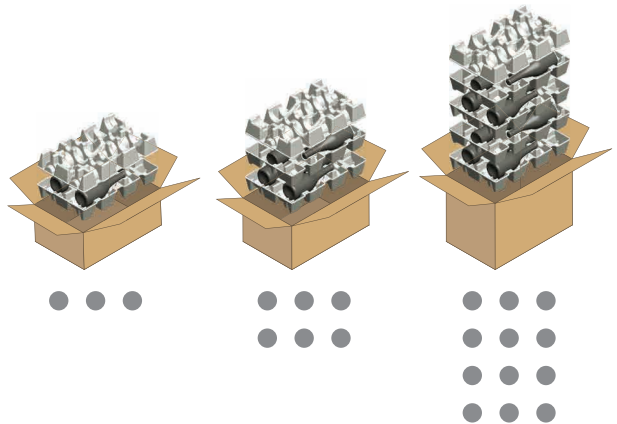
Like all of Western’s shippers, this design offers the best balance in versatility, economy, performance and sustainability.



3-6-12XL Bottle LAYDOWN

Specifications

The larger, versatile shipper provides room for today’s bottle shapes, more shock-absorbing protection, and a constant carton depth that increases pack-out efficiency.



AVAILABLE QUANTITIES

Case	22 Shippers
Case/Pallet	704 Shippers
Bulk /Pallet	704 Shippers

CONFIGURATION

Pack Count	3
Shipper Count	2
Cubic Feet	1.05

CONFIGURATION

Pack Count	6
Shipper Count	3
Cubic Feet	1.48

CONFIGURATION

Pack Count	12
Shipper Count	5
Cubic Feet	2.35

Accepts 3.65-inch diameter bottles.

Allows the carton's depth to remain constant, eliminating the need for multi-scored flaps.

Fits tall-shouldered bottles.

Designed to fit high shoulders up to 9.5 inches.

ACCEPTS LARGER DIAMETER BOTTLES

Minimum 1-inch clearance.

The energy-absorbing zone surrounding each bottle has been expanded for increased protection.

Accepts 14.25-inch tall, slender bottles.

Fits difficult-to-package Rhine-style (hock) bottles also known as Alsace or Mosel.





**DESIGNED & TESTED FOR
HIGH-VOLUME
FULFILLMENT
CUSTOMERS**

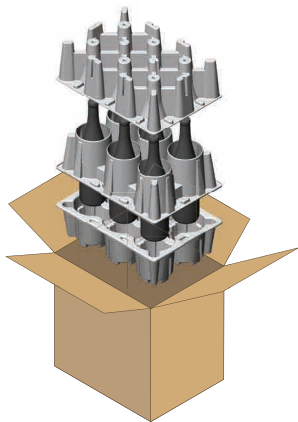
6 Bottle HALF CASE

Specifications

Now high-volume fulfillment customers have the choice of two Vintner's Choice upright 6 Bottle and 12 Bottle premium molded fiber wine shippers.

The versatile shippers accommodate a full range of bottle shapes.

For pack-out efficiency, Western's three-part design provides ease of handling, quick bottle loading and simple inspection of contents prior to sealing the carton.



BULK PALLET *
Count | 3 Pallets
Quantity | 405 Shippers

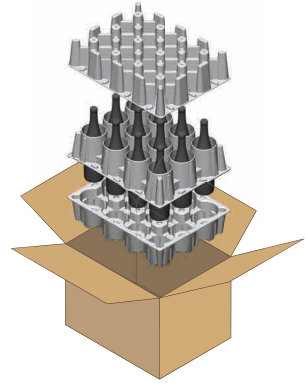
MIXED PALLET
Count | 1 Pallet
Quantity | 135 Shippers

** Minimum bulk order consists of 1 pallet each of top, middle and bottom pieces.*

Specifications

The 6 Bottle Half Case and 12 Bottle Case shippers have repeatedly met the high standards of both FedEx and UPS test labs.

Sustainable packaging, made in the U.S.A. Shippers have 99% minimum recycled content and can be recycled after use.



BULK PALLET*
Count | 3 Pallets
Quantity | 216 Shippers

MIXED PALLET
Count | 1 Pallet
Quantity | 72 Shippers



** Minimum bulk order consists of 1 pallet each of top, middle and bottom pieces.*

12 Bottle CASE

**DESIGNED & TESTED FOR
HIGH-VOLUME
FULFILLMENT
CUSTOMERS**



The design that fits today's 1.5L bottle profiles.

Developed with input from leading consumer-direct fulfillment and supply chain services for the wine industry, this shipper is designed to be:

- Extremely cost competitive;
- Adaptable to the industry's diverse bottle sizes;
- Secures both low- and high-shouldered bottles;
- Able to withstand the hazards of today's distribution environment;
- Compact, significantly reduces storage space compared to EPS.

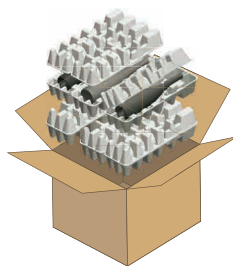
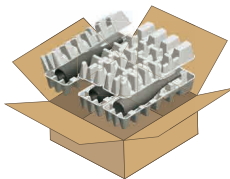
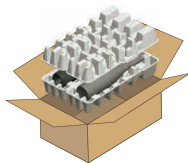
1.5L Magnum **LAYDOWN**

Specifications

A single folding shipper provides packing configurations for one to six 1.5L magnum bottles. Accepts diverse sizes ranging up to 19-inch tall slender bottles to wider 4.5-inch diameter slope-shouldered bottles.

AVAILABLE QUANTITIES

Case	18 Shippers
Case/Pallet	630 Shippers
Bulk/Pallet	N/A



CONFIGURATION

Pack Count	1
Shipper Count	1
Cubic Feet	0.68

CONFIGURATION

Pack Count	2
Shipper Count	2
Cubic Feet	1.35

CONFIGURATION

Pack Count	3
Shipper Count	3
Cubic Feet	2.03

CONFIGURATION

Pack Count	4
Shipper Count	4
Cubic Feet	2.68

CONFIGURATION

Pack Count	6
Shipper Count	6
Cubic Feet	4.02

Accepts 19-inch tall, slender bottles.

Fits difficult-to-package Rhine-style (hock) bottles also known as Alsace or Mosel.



Accepts 4.5-inch diameter bottles.

Secures both low- and high-shouldered Burgundy and Bordeaux bottles.

Smart saddle design.

Lower saddle captures tall bottles, reduces movement of shorter bottles.

Contact us



Western Pulp Products Company

Corvallis, Oregon • 800-547-3407 • westernpulp.com

WESTERN is a registered trademark of Western Pulp Products Company. Copyright © 2019

Wine bottles shown do not represent an endorsement by the vintner. Trademarks are protected by their respective owners.